

FaceSim

FaceSim is the cutting-edge anatomical and procedural training solution that revolutionizes education in anatomy, plastic surgery, dermatology, and more. With its lifelike features and innovative design, FaceSim offers an unparalleled learning experience for students and professionals alike .

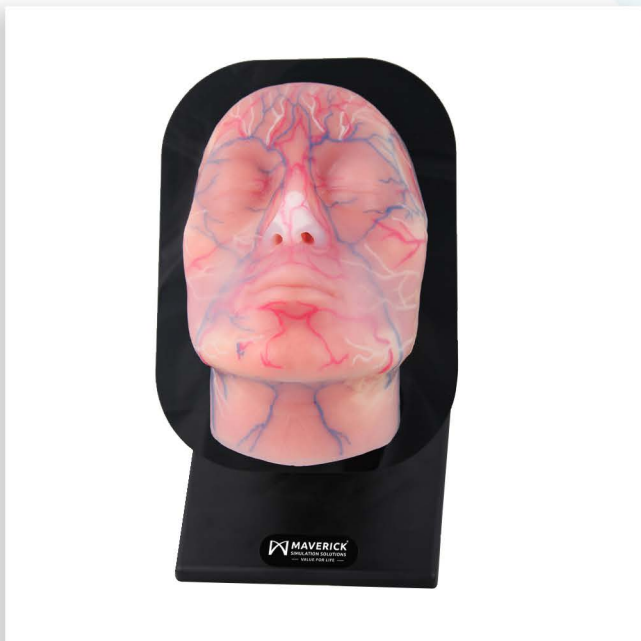
Features

- Resembles the model of an adult human face with precise surface anatomy.
- Easily peelable skin to reveal internal facial structures.
- Accurate representation of facial veins, arteries, nerves, muscles, and bones.
- One side features a parotid gland and duct; the other side showcases facial nerve and branches.
- Accurate feel over soft tissue, cartilage, bone, and muscle.
- Anatomically correct upper and lower lateral cartilage, septum, and anterior nasal spine.



Skills Gained

- Thread Facial Lifting - Learn anchor lifting through the SMAS layer; and specialized training for glabellar, temporal, perioral, nasolabial, nasal, and infraorbital regions.
- Facial Injections - Visualize facial anatomy, safely practice avoiding vessels and nerves; and adjusting injection volume.
- Fillers and Fat Grafting - Master techniques and achieve the best results.
- Botulinium Toxin Injections - Enhance skills and improve patient outcomes.
- Repetition for Mastery - Easily remove filler imitator and repeat procedures to refine your skills.








REVOLUTIONIZING MEDICAL TRAINING WITH CUTTING EDGE SIMULATORS

Maverick Simulation Solutions Ltd. is a trusted medical simulation company advancing healthcare education through the design, manufacturing, and deployment of state-of-the-art simulators. Led by experts across engineering and clinical domains, we deliver innovations that measurably improve training quality, learner competency, and patient safety.

MAVERICK SIMULATION SOLUTIONS LIMITED

-  Plot No. 1, 3rd Floor, Sector 12B
Dwarka, New Delhi – 110078 (India)
-  +91 - 9205139008
-  info@mavericksimulation.com
-  www.mavericksimulation.com

Join Us

